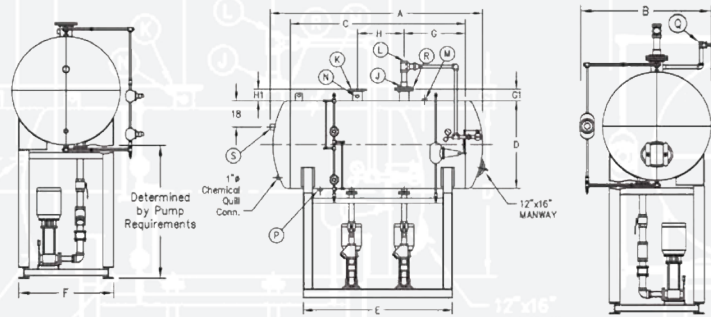




# **DEAERATOR SYSTEMS**

## ***SPRAY SCRUBBER & CUSTOMIZED DUAL COMPARTMENT DEAERATORS***

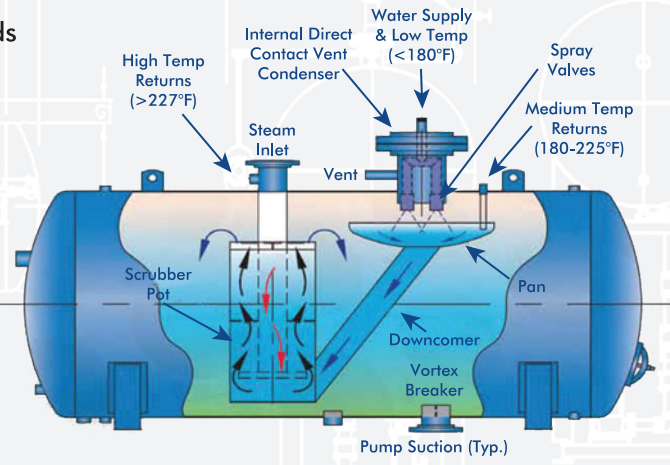
Designed for Maximum Efficiency, Reliability  
and Durability for Today's Most Demanding Environments.



	SS3.5	SS5	SS7	SS9	SS11	SS14	SS18	SS21	SS24	SS30	SS35	SS40	SS50	SS60	SS70	SS80	SS90	SS100	SS110	SS125	SS150	SS175	SS200	SS225	SS250	SS300	
CAPACITY (PPH) X 1000	3.5	5	7	9	11	14	18	21	24	30	35	40	50	60	70	80	90	100	110	125	150	175	200	225	250	300	
GALLONS**	150	150	150	180	230	430	430	430	500	675	800	800	1020	1230	1450	1620	1950	1950	2225	2750	3300	3550	4400	4600	5225	6100	
STORAGE(MIN)	21	15	10.5	10	10	15	12	10	10	11	11	10	10	10	10	10	10.5	10	10	11	11	10	11	10	10	10	
OVERALLS:																											
LENGTH	A	81	81	81	93	117	99	99	99	111	147	105	105	129	153	123	135	159	159	183	165	189	201	237	195	219	243
WIDTH	B	51	51	51	51	51	63	63	63	63	63	75	75	75	75	87	87	87	87	87	99	99	99	84	111	111	111
DIMENSIONS:																											
SHELL LENGTH	C	60	60	60	72	96	72	72	72	84	120	72	72	96	120	84	96	120	120	144	120	144	156	192	144	168	192
SHELL DIAMETER	D	36	36	36	36	36	48	48	48	48	48	60	60	60	60	72	72	72	72	84	84	84	84	96	96	96	96
BASE LENGTH	E	50	50	50	62	86	62	62	62	74	110	62	62	86	110	74	86	110	110	134	110	134	146	182	134	158	182
BASE WIDTH	F	36	36	36	36	36	48	48	48	48	60	60	60	60	72	72	72	72	72	84	84	84	84	96	96	96	96
WATER INLET	G	15	15	15	22	19	22	22	32	24	22	25	26	22	24	32	32	32	32	32	32	29	32	32	34	36	36
STEAM INLET	H	21	21	21	21	32	32	32	32	32	32	32	36	36	36	36	36	36	36	36	36	46	46	46	46	46	46
CONNECTIONS:*																											
WATER INLET	J	1 1/2	1 1/2	1 1/2	1 1/2	1 1/2	2 1/2	2 1/2	2 1/2	2 1/2	3	3	3	3	3	3	4	4	4	4	4	6	6	6	6	6	8
STEAM INLET	K	3	3	3	3	4	6	6	6	6	8	8	8	8	8	10	10	10	10	10	10	12	14	14	16	16	16
TEMP RETURN																											
LOW (<180°F)	L	1 1/2	1 1/2	1 1/2	1 1/2	1 1/2	2 1/2	2 1/2	2 1/2	2 1/2	3	3	3	3	3	3	4	4	4	4	4	6	6	6	6	6	8
MED (180°-227°F)	M	1	1	1	1	1 1/4	1 1/4	1 1/4	1 1/4	1 1/2	1 1/2	2	2	2	2 1/2	2 1/2	2 1/2	2 1/2	2 1/2	2 1/2	2 1/2	3	3	4	4	6	6
HIGH (>227°F)	N	1 1/4	1 1/4	1 1/4	1 1/4	1 1/4	1 1/4	1 1/4	1 1/4	1 1/2	1 1/2	1 1/2	1 1/2	1 1/2	1 1/2	2	2	2 1/2	2 1/2	2 1/2	2 1/2	3	3	4	4	6	6
DRAIN	P	1 1/2	1 1/2	1 1/2	1 1/2	2	2	2	2	2 1/2	2 1/2	2 1/2	2 1/2	2 1/2	2 1/2	2 1/2	2 1/2	2 1/2	2 1/2	2 1/2	2 1/2	3	3	3	3	3	3
MANUAL VENT	Q	3/4	3/4	3/4	3/4	3/4	3/4	3/4	3/4	1 1/2	1 1/2	1 1/2	1 1/2	1 1/2	1 1/2	2	2	2	2	2	2	2 1/2	2 1/2	2 1/2	2 1/2	3	
VENT CONDENSER																											
(FLG. SIZE)	R	3	3	3	3	6	6	6	6	6	12	12	12	12	12	12	12	12	12	14	16	24	30	30	30	36	
OVERFLOW	S	1 1/2	1 1/2	2	2	2	2	2	2	2	2	2	3	3	3	3	4	4	4	4	6	6	6	6	6	6	6

\*Up to 300,000 lbs./hr. Oxygen removal in excess of .005 cc/liter. \*\*Larger capacities available upon request.

- + Most economical deaerator system for nearly steady loads
- + Two stage design water is sprayed onto a pan to preheat inlet water and provide partial deaeration, followed by the second stage where the water is forced into the scrubber pot to remove oxygen to .005 cc/liter
- + Custom configurations including: standard dual compartment with attached surge tank, and piggy-back style with surge tank below
- + Available with a stainless steel surge tank or liner
- + Nema 4 single point UL Listed Industrial Enclosure
- + Sizes available up to 500,000 pph



Superior Boiler leads the way in the design and manufacture of industrial and commercial boilers for all market segments. With over 100 years' experience in the industry, our customers don't just trust what we build, they trust the people who build them. Complete boiler systems built to exacting standards, **made in the USA**, and installed throughout the world.

