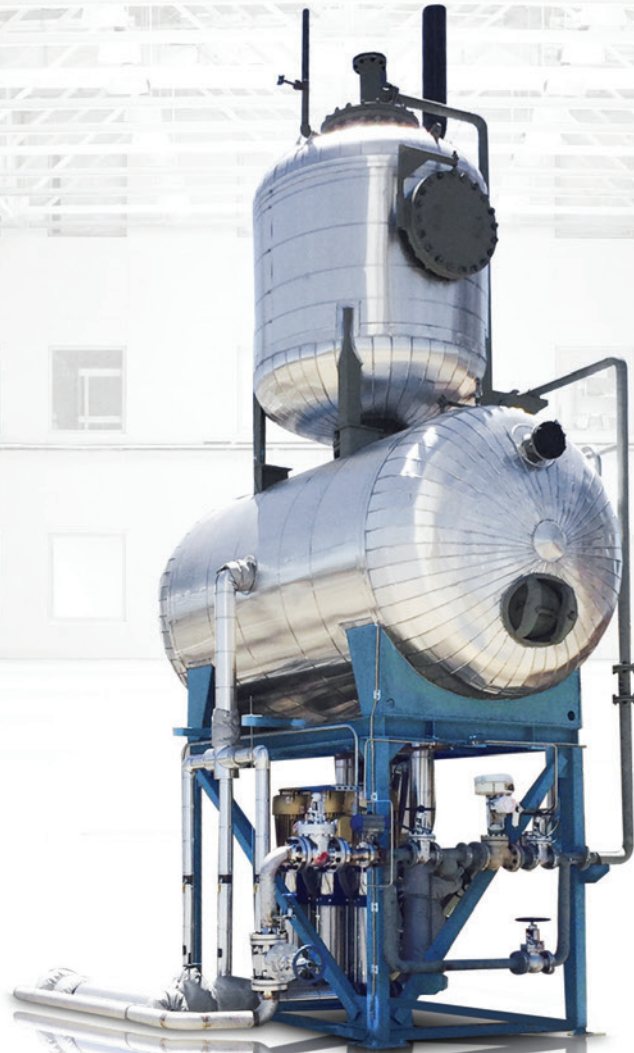


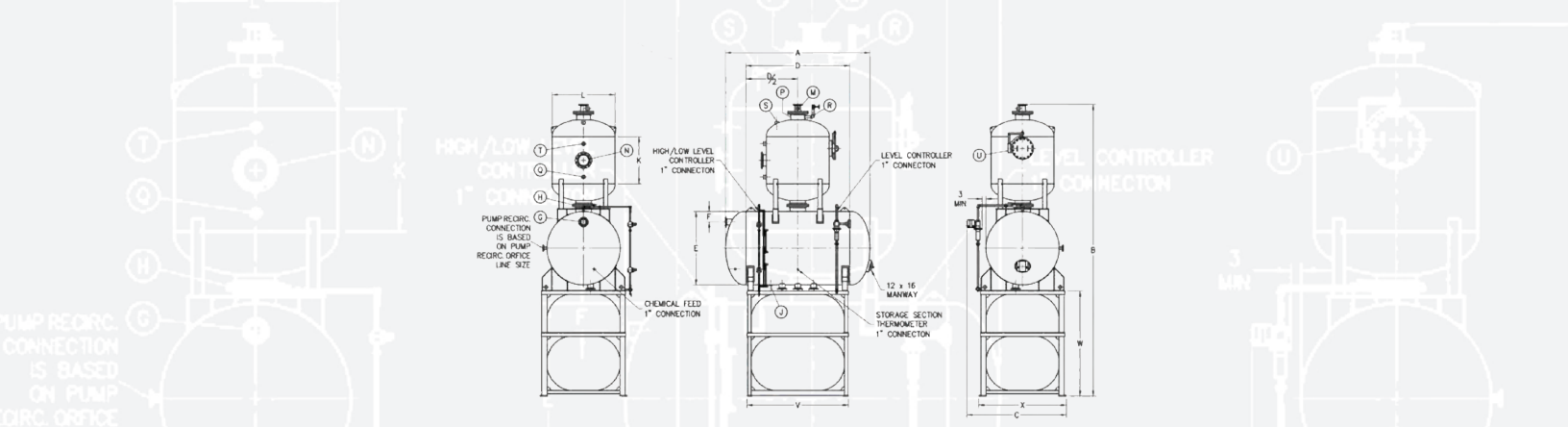
**S**UPERIOR  
BOILER  
BUILT TO **OUTPERFORM**



# DEAERATOR SYSTEMS

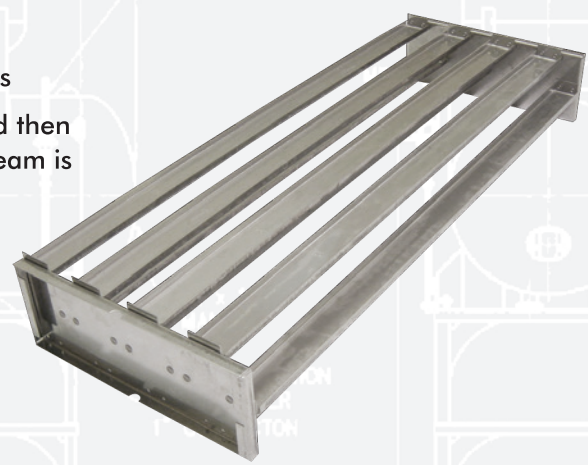
## **TRAY COMPARTMENT DEAERATORS**

Designed for Maximum Efficiency, Reliability  
and Durability for Today's Most Demanding Environments.



	TC3.5	TC5	TC7	TC9	TC11	TC14	TC18	TC21	TC24	TC30	TC35	TC40	TC50	TC60	TC70	TC80	TC90	TC100	TC110	TC125	TC150	TC175	TC200	TC225	TC250	TC300	
CAPACITY (PPH) X 1000	3.5	5	7	9	11	14	18	21	24	30	35	40	50	60	70	80	90	100	110	125	150	175	200	225	250	300	
GALLONS**	75	100	140	185	220	290	360	420	500	595	700	800	1000	1200	1400	1600	1800	2000	2200	2500	3000	3500	4000	4500	5000	6000	
STORAGE(MIN)	10.5	10	10	10	10	10	10	10	10	10	10	10	10	10	10	10	10	10	10	10	10	10	10	10	10	10	
<b>OVERALL DIMENSIONS</b>																											
LENGTH	A	64 <sup>3/8</sup>	76 <sup>3/8</sup>	108 <sup>3/8</sup>	85 <sup>1/4</sup>	91 <sup>1/2</sup>	93 <sup>3/8</sup>	105 <sup>3/8</sup>	117 <sup>3/8</sup>	109 <sup>1/4</sup>	121 <sup>1/4</sup>	112 <sup>1/4</sup>	124 <sup>1/4</sup>	106 <sup>3/8</sup>	130 <sup>3/8</sup>	142 <sup>3/8</sup>	123 <sup>3/8</sup>	135 <sup>3/8</sup>	158 <sup>3/8</sup>	171 <sup>3/8</sup>	141 <sup>3/8</sup>	164 <sup>3/8</sup>	177 <sup>3/8</sup>	170 <sup>3/8</sup>	183 <sup>3/8</sup>	195 <sup>3/8</sup>	231 <sup>3/8</sup>
HEIGHT	B	← JOB - SPECIFIC DIMENSIONS →																									
WIDTH	C	34 <sup>3/8</sup>	34 <sup>3/8</sup>	34 <sup>3/8</sup>	44 <sup>3/8</sup>	44 <sup>3/8</sup>	49 <sup>7/8</sup>	49 <sup>7/8</sup>	49 <sup>7/8</sup>	55 <sup>1/8</sup>	55 <sup>1/8</sup>	60 <sup>1/8</sup>	60 <sup>1/8</sup>	71 <sup>7/8</sup>	71 <sup>7/8</sup>	71 <sup>7/8</sup>	80 <sup>7/8</sup>	80 <sup>7/8</sup>	80 <sup>7/8</sup>	80 <sup>7/8</sup>	113 <sup>3/8</sup>	113 <sup>3/8</sup>	113 <sup>3/8</sup>	127 <sup>7/8</sup>	127 <sup>7/8</sup>	127 <sup>7/8</sup>	127 <sup>7/8</sup>
<b>HORIZONTAL TANK</b>																											
SHELL LENGTH	D	48	60	84	66	72	72	84	96	84	96	84	96	72	96	108	84	96	119	132	96	119	132	119	132	144	180
SHELL DIAMETER	E	24	24	24	30	30	36	36	36	42	42	48	48	60	60	60	72	72	72	72	84	84	84	96	96	96	96
OVERFLOW	F	6	6	6	6	6	6	6	6	6	6	7	7	9	9	9	10	10	10	10	12	12	12	14	14	14	14
OVERFLOW	G	1 <sup>1/2</sup>	1 <sup>1/2</sup>	2	2	2	2	2	2	2	2	2	2	3	3	3	3	4	4	4	4	6	6	6	6	6	6
DOWNCOMER	H	4	4	4	4	6	6	8	8	8	8	12	12	12	14	14	16	18	18	18	18	18	18	20	20	20	24
DRAIN W/ PLUG	J	1 <sup>1/2</sup>	1 <sup>1/2</sup>	1 <sup>1/2</sup>	1 <sup>1/2</sup>	2	2	2	2	2 <sup>1/2</sup>	2 <sup>1/2</sup>	2 <sup>1/2</sup>	2 <sup>1/2</sup>	2 <sup>1/2</sup>	2 <sup>1/2</sup>	2 <sup>1/2</sup>	2 <sup>1/2</sup>	2 <sup>1/2</sup>	2 <sup>1/2</sup>	2 <sup>1/2</sup>	2 <sup>1/2</sup>	3	3	3	3	3	
<b>VERTICAL TANK</b>																											
SHELL LENGTH	K	54	54	54	54	54	54	54	54	54	54	54	54	54	54	54	54	54	54	54	54	66	60	60	66	60	
SHELL DIAMETER	L	18	18	18	18	24	24	30	30	30	36	36	36	42	48	54	60	60	60	60	72	72	72	84	84	84	96
WATER INLET	M	1 <sup>1/2</sup>	1 <sup>1/2</sup>	1 <sup>1/2</sup>	1 <sup>1/2</sup>	2 <sup>1/2</sup>	2 <sup>1/2</sup>	2 <sup>1/2</sup>	2 <sup>1/2</sup>	2 <sup>1/2</sup>	2 <sup>1/2</sup>	3	3	3	4	4	4	4	4	4	6	6	6	6	6	6	
STEAM INLET	N	3	3	3	3	4	6	6	6	6	8	8	8	8	8	10	10	10	10	10	12	12	14	14	16	16	
VENT CONDENSER	P	3	3	3	3	3	6	6	6	6	12	12	12	12	12	12	12	12	14	16	16	24	24	30	30	36	
HIGH TEMP. RETURN	Q	1 <sup>1/4</sup>	1 <sup>1/4</sup>	1 <sup>1/4</sup>	1 <sup>1/4</sup>	1 <sup>1/4</sup>	1 <sup>1/4</sup>	1 <sup>1/4</sup>	1 <sup>1/4</sup>	1 <sup>1/4</sup>	1 <sup>1/2</sup>	1 <sup>1/2</sup>	1 <sup>1/2</sup>	1 <sup>1/2</sup>	2	2	2 <sup>1/2</sup>	2 <sup>1/2</sup>	2 <sup>1/2</sup>	2 <sup>1/2</sup>	3	3	3	4	4	6	
MANUAL VENT	R	3/4	3/4	3/4	3/4	3/4	3/4	3/4	1 <sup>1/2</sup>	1 <sup>1/2</sup>	1 <sup>1/2</sup>	1 <sup>1/2</sup>	1 <sup>1/2</sup>	1 <sup>1/2</sup>	1 <sup>1/2</sup>	2	2	2	2	2	2 <sup>1/2</sup>	2 <sup>1/2</sup>	2 <sup>1/2</sup>	2 <sup>1/2</sup>	2 <sup>1/2</sup>	3	
RELIEF VALVE	S	← JOB - SPECIFIC DIMENSIONS →																									
VACUUM BREAKER	T	1 <sup>1/2</sup>	1 <sup>1/2</sup>	1 <sup>1/2</sup>	1 <sup>1/2</sup>	1 <sup>1/2</sup>	2	2	2	2	2 <sup>1/2</sup>	2 <sup>1/2</sup>	2 <sup>1/2</sup>	2 <sup>1/2</sup>	2 <sup>1/2</sup>	2 <sup>1/2</sup>	3	3	3	3	3	4	4	4	4	4	
TRAY BOX ACCESS	U	12	12	12	12	16	16	16	16	16	18	18	18	18	18	20	20	20	20	20	20	20	24	24	24	24	
<b>SKID DIMENSION</b>																											
SKID LENGTH	V	45	57	81	63	69	69	81	93	61	93	81	93	69	93	105	81	93	116	129	93	116	129	116	129	141	177
SKID HEIGHT	W	← JOB - SPECIFIC DIMENSIONS →																									
SKID WIDTH	X	21 <sup>1/4</sup>	21 <sup>1/4</sup>	21 <sup>1/4</sup>	31	31	36 <sup>1/2</sup>	36 <sup>1/2</sup>	36 <sup>1/2</sup>	41 <sup>3/4</sup>	41 <sup>3/4</sup>	46 <sup>3/4</sup>	46 <sup>3/4</sup>	58 <sup>1/2</sup>	58 <sup>1/2</sup>	58 <sup>1/2</sup>	67 <sup>1/2</sup>	67 <sup>1/2</sup>	67 <sup>1/2</sup>	67 <sup>1/2</sup>	100 <sup>1/2</sup>	100 <sup>1/2</sup>	100 <sup>1/2</sup>	114 <sup>1/2</sup>	114 <sup>1/2</sup>	114 <sup>1/2</sup>	114 <sup>1/2</sup>

- + Capable of handling a wide variety of heavily swinging loads
- + Two stage design where water is sprayed and preheated and then cascades onto a series of high grade stainless trays while steam is injected to drive off dissolved gases to .005 cc/liter
- + Custom configurations of tray boxes in the vertical or horizontal positions
- + Available with a stainless steel surge tank or liner
- + Nema 4 single point UL Listed Industrial Enclosure
- + Sizes available up to 1,000,000 pph



Superior Boiler leads the way in the design and manufacture of industrial and commercial boilers for all market segments. With over 100 years' experience in the industry, our customers don't just trust what we build, they trust the people who build them. Complete boiler systems built to exacting standards, **made in the USA**, and installed throughout the world.

